

## \$5000 Available to Landowners!

### Riparian Areas Assessment and Restoration Project SEAWA Watershed

#### This Project Will...

##### Restore a total of 10 km of riparian area

Eligible applicants (potential partners) can receive **50% of project costs, up to a maximum of \$5,000, including the cost of equipment, materials, and labour.**

Applications and restoration plans for funding are currently being accepted. Projects can begin as soon as partnership agreements are signed. Projects must be completed by March 2019.

##### Educate the watershed community

This project will generate awareness about water quality and riparian health in the SEAWA Watershed. It is an opportunity to talk to landowners, and make connections while implementing on-the-ground restoration work.

##### Assess riparian area conditions

Conditions have been rated as Good, Fair, or Poor using an aerial imagery assessment of the entire Seven Persons Creek watershed. Visit the 'Project Reports' page at SEAWA.ca to find the report.

#### What Are Riparian Areas?

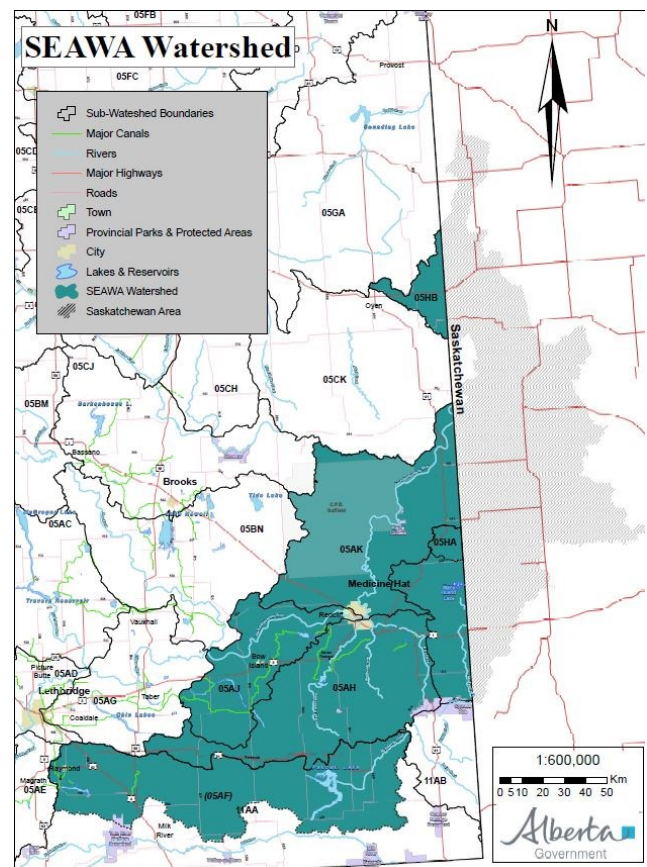
Riparian areas are the transition areas between streams and lakes, and adjacent uplands. They are important part of overall watershed function.

Healthy riparian areas provide ecological and social services including: improving water quality, floodwater conveyance and storage, bank and shoreline stabilization, recreational opportunity, and provision of habitat for many plants, fish, birds, and other animals.

#### Are You Eligible For Funding?

Funding is currently limited to areas within the SEAWA watershed including lands adjacent to:

- South Saskatchewan River
- Seven Persons Creek
- Ross Creek
- Gros Ventre Creek
- Bullshead Creek
- Peigan Creek
- And unnamed tributaries
- Murray, Seven Persons, Rattlesnake, Bullshead, Pakowki, 40 Mile Coulee, Milk River Ridge, Burdett and other lakes and reservoirs.



## Eligible Projects May Include:

- Planting of native shrubs or trees, including installation of temporary water systems, installation of temporary protective cases around vegetation to deter browsing, and/or protecting bare sediment/soil with mulch or native plants
- Site preparation for planting (Removal and disposal of invasive species and noxious weeds; removal of old structures (excluding in-stream structures) flow impediments, and/or paved surfaces adjacent to streams or riparian areas; Installation of biodegradable erosion prevention materials)
- Fencing to manage livestock access to riparian areas
- Portable livestock shelters
- Installation of off-stream livestock watering systems
- Collection and disposal of garbage
- Bio-engineering projects
- Establishing vegetative riparian buffers upslope of engineered erosion control structures
- Other partner proposed projects, subject to approval.



Photo: P. Jablkowski

**Degraded Riparian Area**



**Healthy Riparian Area**

The South East Alberta Watershed Alliance (SEAWA) is a multi-stakeholder, volunteer based, not-for-profit society designated as a Watershed Planning and Advisory Council (WPAC) by the Government of Alberta to help achieve the goals of the *Water for Life* strategy. ([www.waterforlife.alberta.ca](http://www.waterforlife.alberta.ca))

This project is part of SEAWA's goals to evaluate and report on watershed condition and promote environmental stewardship.

Visit [www.seawa.ca](http://www.seawa.ca) for more information.

## Please Contact...

[natasha.rogers@seawa.ca](mailto:natasha.rogers@seawa.ca)  
(403) 580-8980  
South East Alberta Watershed Alliance  
Rm 41, 419 - 3rd Street SE  
Medicine Hat, AB T1A 0G9

[www.SEAWA.ca](http://www.SEAWA.ca)

Funded in partnership with the Government of Alberta Watershed Resiliency and Restoration Program, and the Government of Canada Recreational Fisheries Conservation Partnerships Program

