

## WHO IS SEAWA?

The South East Alberta Watershed Alliance (SEAWA) is a collaborative, multi-stakeholder, volunteer-based, not-for-profit society that serves as the Watershed Planning and Advisory Council (WPAC) for the South Saskatchewan River Sub-Basin within Alberta, and the Pakowki Lake watershed.

The Government of Alberta partners with WPACs to achieve the three goals of *Water for Life – Alberta's Strategy for Sustainability*:

- » Healthy aquatic ecosystems
- » Reliable, quality water supplies for a sustainable economy
- » Safe, secure drinking water

## OUR MISSION

SEAWA brings together diverse partners to educate the public, to support knowledge development, and to develop and facilitate the implementation of management plans for the sustainable use of the South Saskatchewan River Sub-Basin and the Pakowki Lake watershed.

## WHAT SEAWA DOES

**ASSESS** – Obtain information, assess watershed conditions and prepare reports.

**PLAN** – Develop plans to maintain or improve watershed conditions.

**EDUCATE** – Develop and share knowledge about the SEAWA watershed, its issues and their management.

**IMPLEMENT** – Collaborate with watershed stakeholders to implement environmental stewardship initiatives and the recommendations of the South Saskatchewan Regional Plan.

## CONTACT US

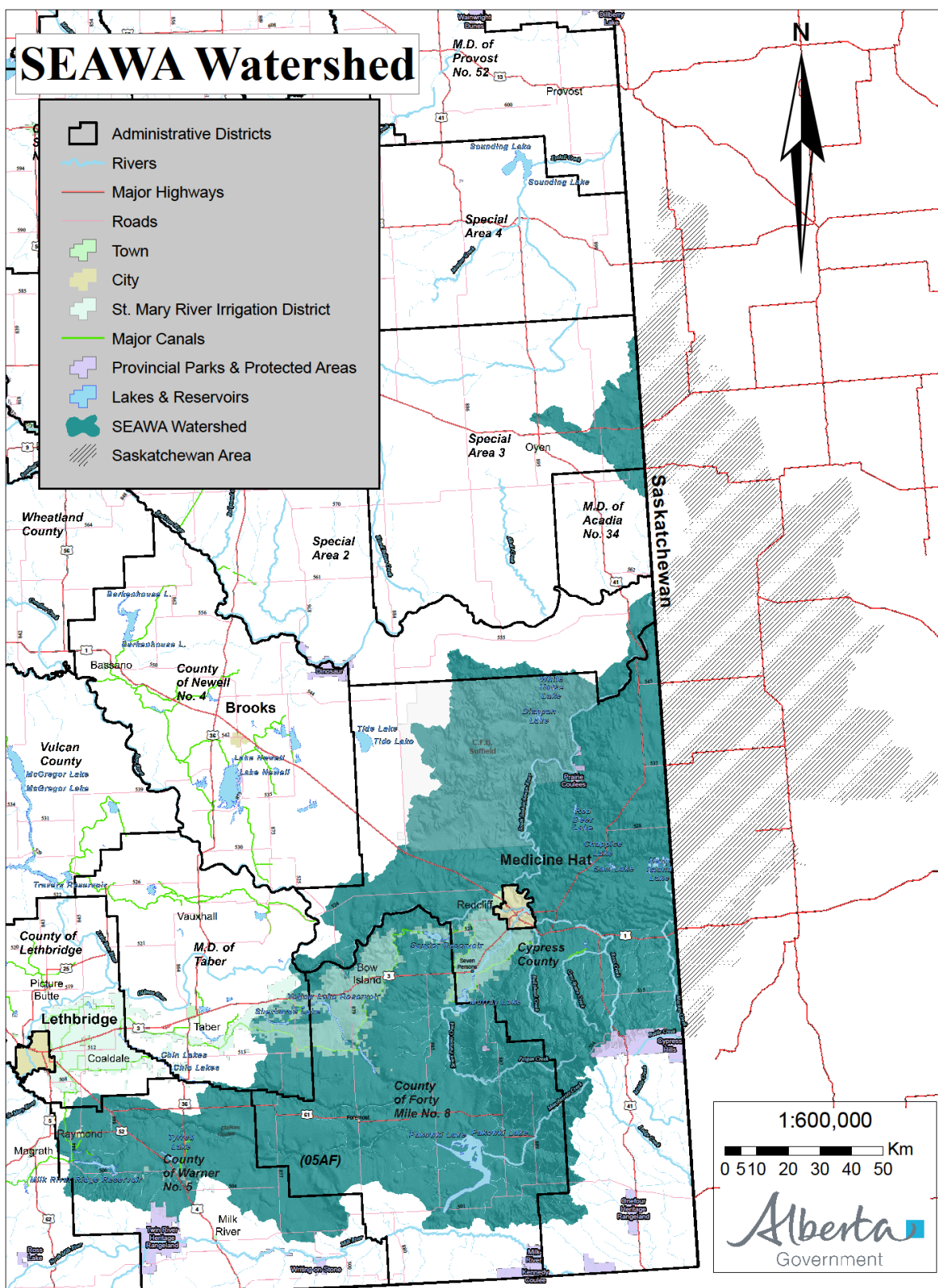
Rm 41, 419 - 3rd Street SE  
Medicine Hat, AB T1A 0G9 [www.seawa.ca](http://www.seawa.ca)  
[executive@seawa.ca](mailto:executive@seawa.ca) 403-580-8980

## WHAT WE'RE UP TO

Seawa Watershed   SEAlbertawaters  
[seawa.ca/newsletters](http://seawa.ca/newsletters)







## WHAT IS A WATERSHED?

A watershed is an area of land from which rainfall and snowmelt drain into a common water body - a river, lake, creek, or wetland. As water moves within a watershed, its characteristics are influenced by the natural environment and human activities.

A large watershed is also called a basin. The South Saskatchewan River Basin includes the Red Deer River, Oldman River, and Bow River watersheds, and the South Saskatchewan River Sub-Basin.

Water quality and quantity are best managed on a watershed scale.

## OUR WATERSHED

The SEAWA watershed consists of the South Saskatchewan River Sub-Basin and the Pakowki Lake watershed. The latter is an internally-drained watershed or a closed drainage system that does not flow into the South Saskatchewan River.

## COLLABORATION

SEAWA watershed stakeholders (those who live, work and play in the watershed) are encouraged to participate in watershed management planning by working with SEAWA, as well as implement individual or collaborative environmental stewardship initiatives. Cooperation with upstream and downstream watersheds is also an integral part of watershed management.

## GET INVOLVED

- » Become a member
- » Run for a board seat or join a committee
- » Partner or volunteer with stewardship initiatives
- » Join our educational forums and events
- » Visit our booth at community events
- » Invite us to your events
- » Donate
- » Subscribe to our mailing list